

**THIS WAY / THAT WAY**  
**Gary Hume: paintings from the 90s**

13 September – 26 October 2024



In 1999 Gary Hume was selected by The British Council to represent Britain at the 48<sup>th</sup> Venice Biennale. Twenty-five years on, and to mark this occasion, Hazlitt Holland-Hibbert are presenting some of the most important early works dating from 1993 through to 1999.

One of the significant artists of the 'YBA' movement, Hume's monumental paintings composed from Dulux high-gloss paint were the staples of the seminal exhibitions *Freeze* (curated by Damien Hirst in 1988) and *Sensation* (Royal Academy of Arts, 1997). Radical for his ability to work within the tradition of painting, whilst reconstructing the genre's rule book, the ten works exhibited present daring figurations of heads, bodies, flowers and objects drawn from popular culture and daily life.

The exceptional painting *Tony Blackburn* (1993) demonstrates Hume's unorthodox and radical application of household gloss paint in the context of art. Included in *Sensation*, its rich glossy border of pinks and yellows set the huge matt black clover in strong relief. Shown alongside other significant works such as *Water Painting* (1999), the series of which was at the Venice Biennale, the syrup-like surfaces are consciously difficult to pin down and act as an echo of Hume's original source material.

The exhibition at Hazlitt Holland-Hibbert is in conjunction with a presentation of Hume's recent work at Sprüth Magers, as well as a selection of prints at Lyndsey Ingram.

Lead image detail:

*Tony Blackburn* (1993), gloss and matt paint on panel, 193 x 137cm

H H-H



*That Way* (1993)  
gloss paint on panel, 122 x 79 cm

## Notes to Editors

Hazlitt Holland-Hibbert is among the leading specialists in Modern and Contemporary British art. Based in London, with an office in New York, the gallery focuses solely on British artists with an international reputation, such as Frank Auerbach, Francis Bacon, Pauline Boty, Patrick Caulfield, Lucian Freud, Barbara Hepworth, Patrick Heron, David Hockney, Howard Hodgkin, Leon Kossoff, Henry Moore, Ben Nicholson, Eduardo Paolozzi, Bridget Riley and Richard Smith.

The gallery participates in major international fairs, including Frieze Masters, TEFAF New York and Art Basel. In recent years, the gallery has held loan exhibitions of Frank Auerbach, Eduardo Paolozzi, Richard Smith, Peter Lanyon, David Hockney, Henry Moore, Barbara Hepworth and Ben Nicholson, Bridget Riley, Howard Hodgkin and Gerald Laing.

## ***THIS WAY / THAT WAY***

***Gary Hume: paintings from the 90s***

13 September – 26 October 2024

Monday – Friday 10am – 6pm

Saturday – 11am – 5pm

Hazlitt Holland-Hibbert

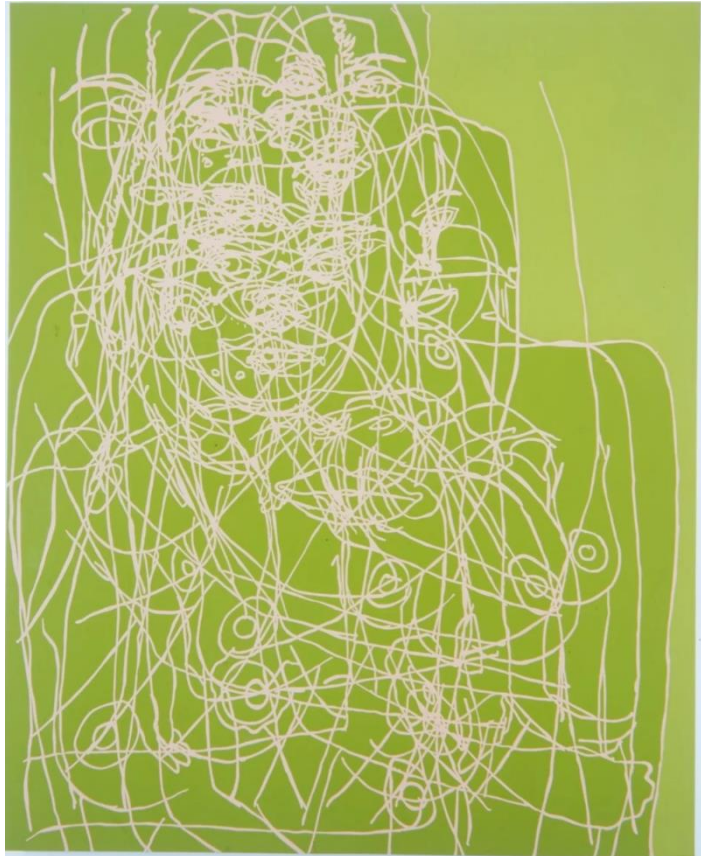
38 Bury Street

St James's

London SW1Y 6BB

W : [www.hh-h.com](http://www.hh-h.com)

T : +44 (0)20 7839 7600



*Water Painting* (1999)  
gloss paint on panel, 200 x 162.5 cm